

WIND TURBINE LIGHTS

MEDIUM INTENSITY L864-LXS-CAP764

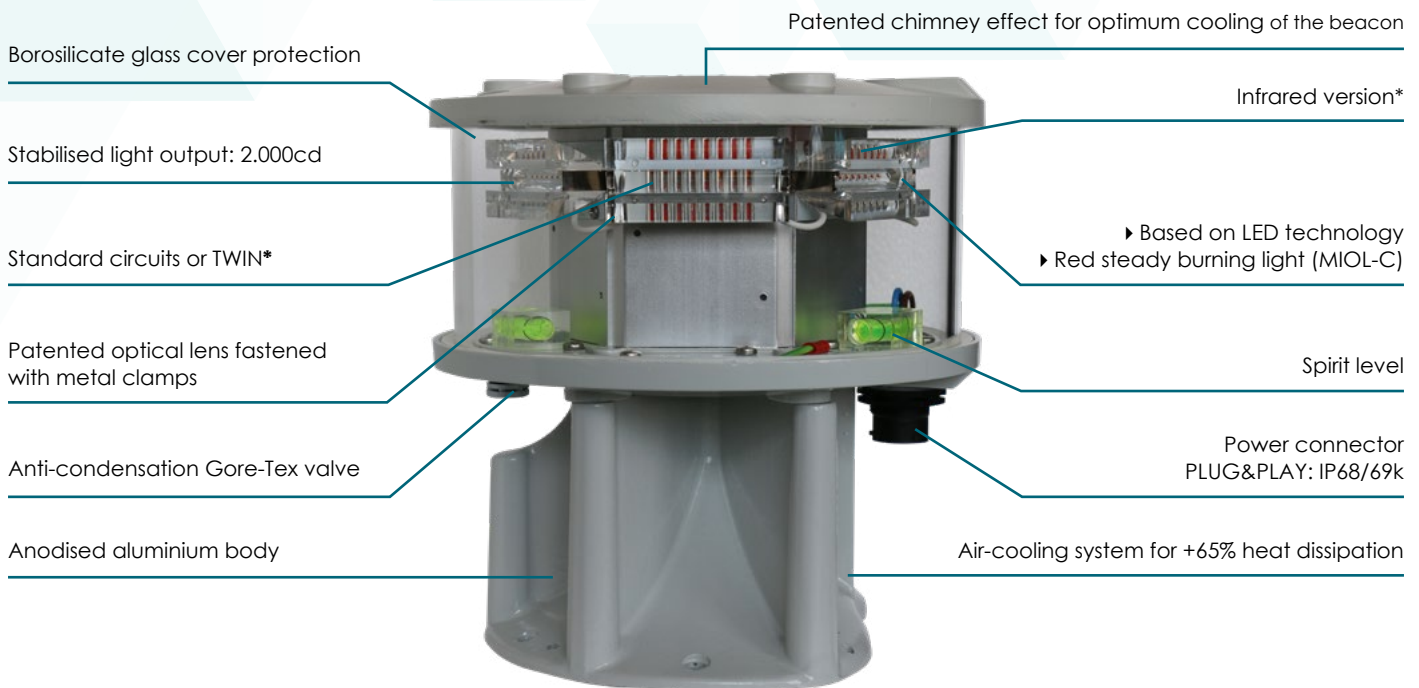


According to CAP764 "Policy and guidelines on wind turbines" and CAP393 "Air navigation order", structures away from the immediate vicinity of an aerodrome, which have a height of 150m or more, need to be fitted with medium intensity steady red lights (Type C of ICAO Annex 14) and positioned on the top of the nacelle.



WIND TURBINE LIGHTS

L864-LXS-CAP764



*as option

IP66

INTERNATIONAL PATENTS: GRANTED AND PENDING

Medium Intensity Obstruction Light is according to ICAO (Medium Intensity – Type C), FAA (L-864) and CAP764 rules.

LUXSOLAR L864-LXS-CAP764 Medium Intensity Obstruction Light has been designed to be a compact and lightweight product a balance of patented lenses, electronics and mechanical components make this device the most reliable LED Aircraft Warning Light available on the market.

MIOL C emits emits red steady burning light.

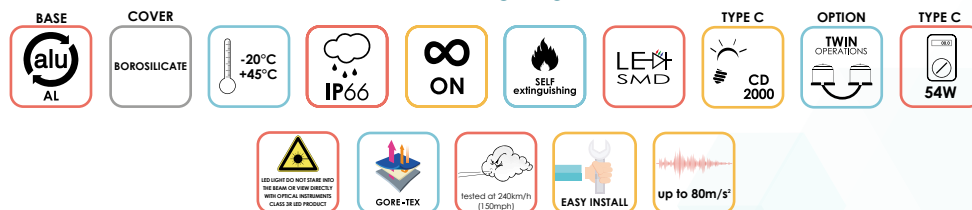
CERTIFICATION



COMPLIANCE



FEATURES



TYPICAL APPLICATION



WIND TURBINE LIGHTS

L864-LXS-CAP764 TECHNICAL SPECIFICATIONS

OPTICAL FEATURES

- Based on LED technology
- RED light 2.000cd, steady burning
- Horizontal beam radiation: 360°
- Vertical beam spread: 4°
- PMMA lens (PMMA)
- Light output alignment device

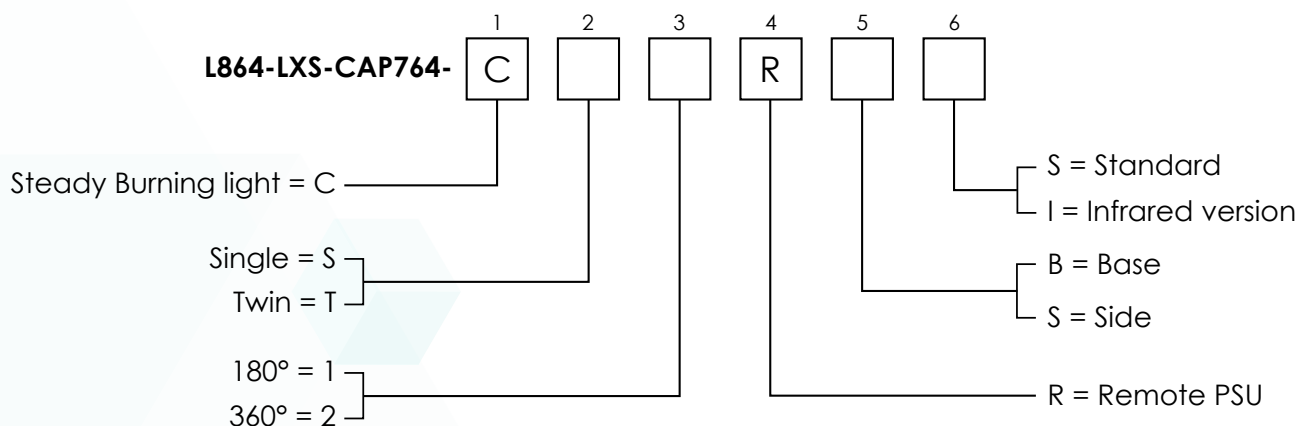
MECHANICAL FEATURES

- Borosilicate glass cover protection
- RAL 7035 painted aluminium body lamp
- Silicon gasket
- Bottom wind collector for central heat-sink cooling
- Degree of protection: IP66
- Anti-condensation Gore-Tex valve
- Wind resistance tested at 240km/h (150mph)
- Vibration resistance up to: 80m/s² (10° Mercalli Intensity Scale / 7° Richter Magnitude Scale)
- Operating temperature: -20°C to +45°C
- Storage temperature: -20°C to +45°C
- Lamp unit weight: 6kg

ELECTRICAL FEATURES

- Alarm/remote status control
- Electronic control parts installed outside the beacon
- Average power consumption for MIOL-C (Steady Burning): 54W
- LED fedded at constant current
- Lightning protection
- No RF-radiations
- Range section of connectable conductors: 0,5mm² to 2,5mm²
- Cable outer diameter range: 7mm to 14mm

ORDER CODE



OPTIONS

- Beacon support bracket
- Horizontal beam radiation: 180°
- Power supply AC or DC
- Infrared 850nm Wavelength
- Twin version: two separated circuits in the same fixture
- Automatic changeover from normal to backup light
- Fault alarm

APPLY TO

- Wind turbines
- Wind measurement devices

CERTIFICATIONS

- CE marking

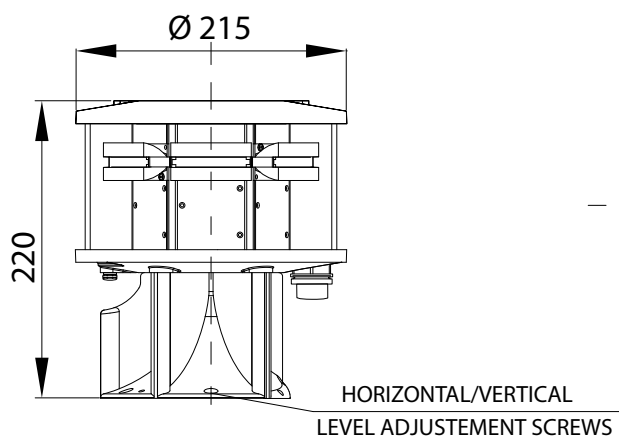
COMPLIANCE

- ICAO Aerodromes -Annex 14 Vol. 1, Ch. 6: Medium intensity, Type C steady burning obstacle light MIOL-C type
- FAA AC150/5345-43F E.B. #67 type L-864
- Licensing of aerodromes - CAP764 and CAP393

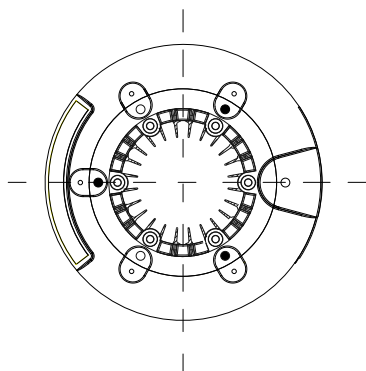
WIND TURBINE LIGHTS

L864-LXS-CAP764 TECHNICAL SPECIFICATIONS

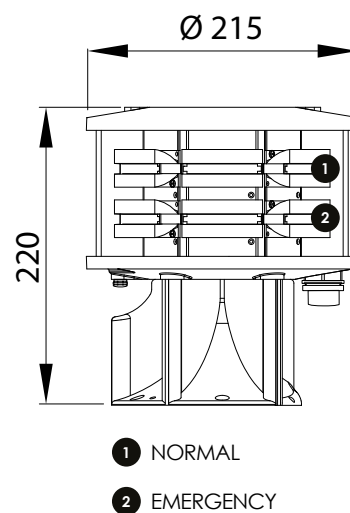
SINGLE VERSION
SIDE VIEW



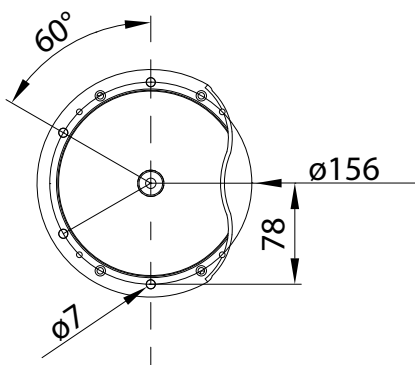
TOP VIEW



TWIN VERSION
SIDE VIEW



BOTTOM VIEW



BOTTOM VIEW
WITHOUT WIND
COLLECTOR

